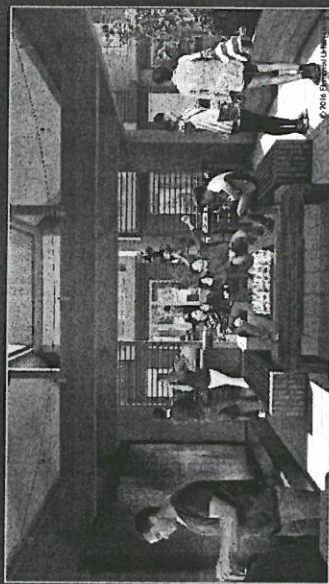
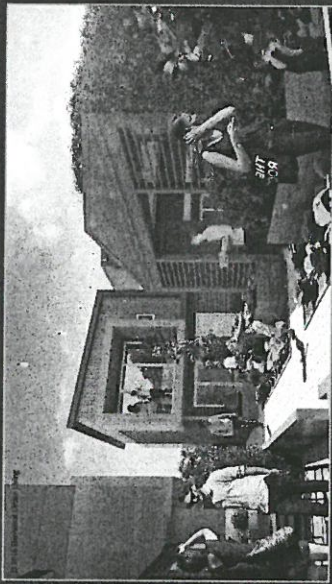




Living on Burnside

Project Overview

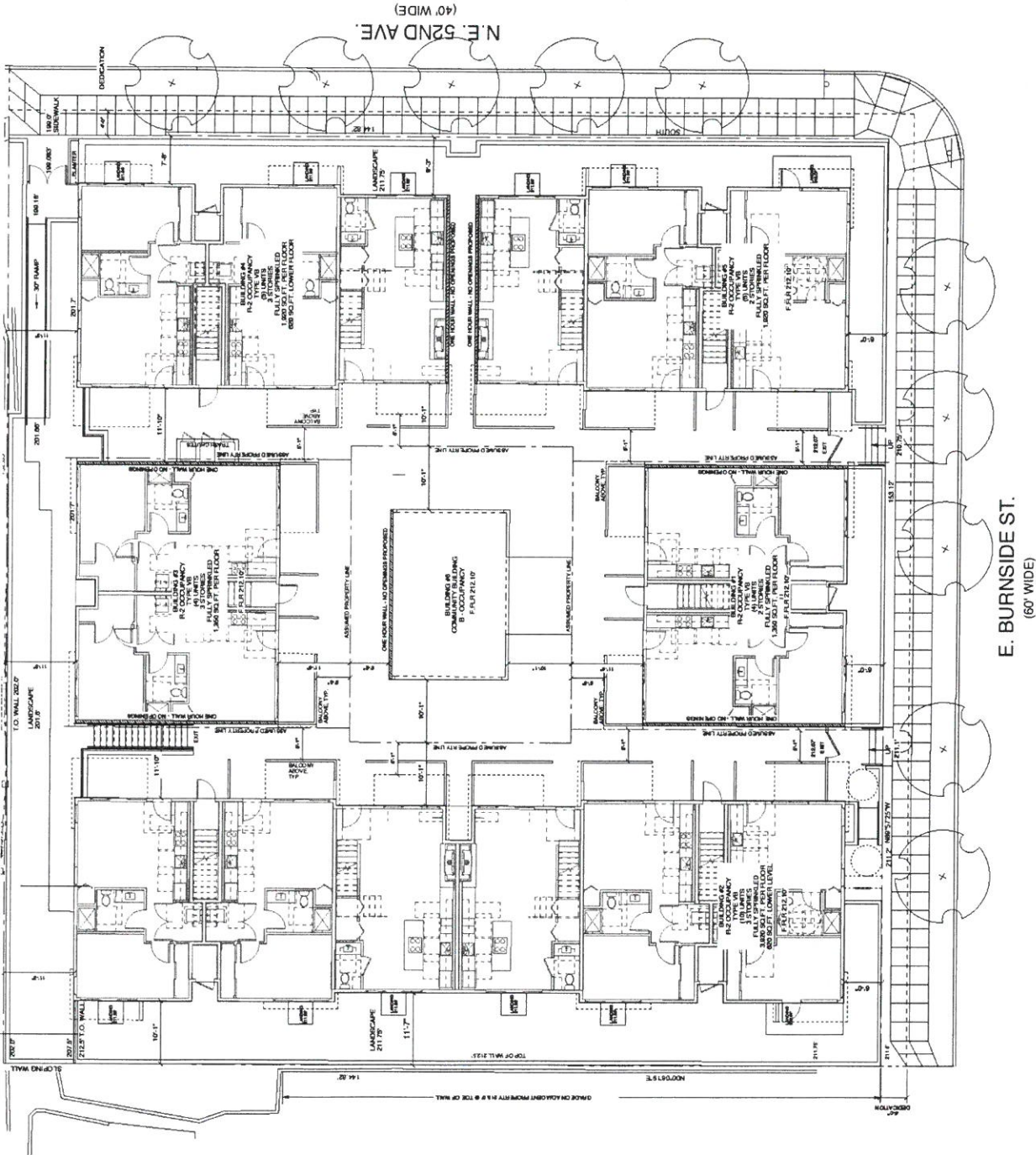


Living on Burnside is a new eco-friendly twenty eight unit courtyard condo project located on the corner of E Burnside and 52nd Ave in Portland Oregon. Located 4 blocks from Providence Hospital, one of the largest employers in Portland. It is a bike and public transit focused development.

Units range from 625-1100 SqFt, priced from \$289-389K. The building features a community courtyard design with a covered fire pit, water feature and BBQ area, topped with an urban habitat roof, mason bee hives and extensive community garden areas. Extensive bike storage and individual storage units are available. All units feature solar hot water heating, great room designs and private balconies on the upper units overlooking the courtyard, while lower units feature private courtyards.

Start date is tentatively set for 7/1/17 with project completion spring of 2018

Please visit our site www.elementalurbanliving.com to learn more about our brand, mission and projects, or contact Ryan Olsen at rolsen@elementalurbanliving.com

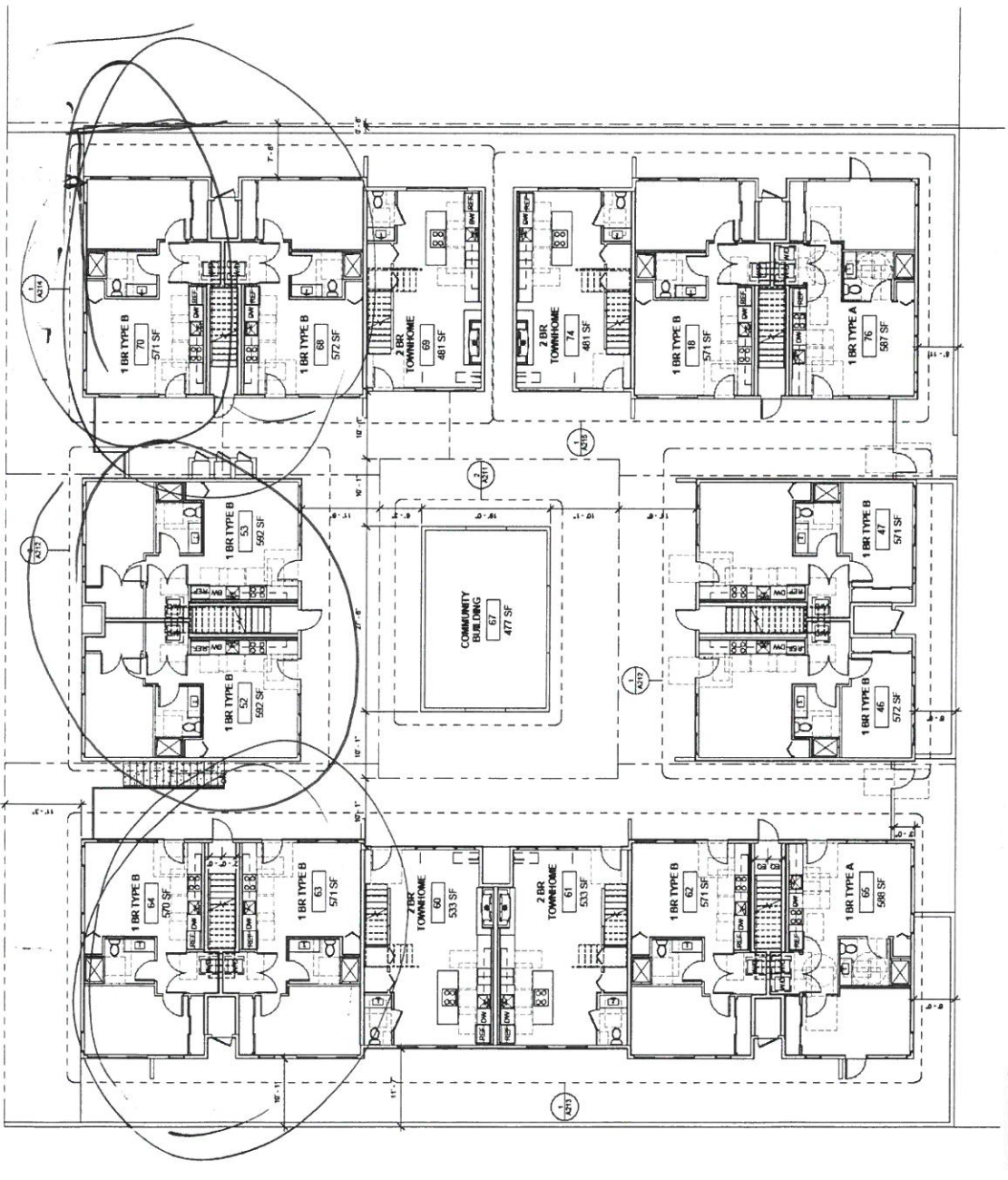


E. BURNSIDE ST.
 (60' WIDE)

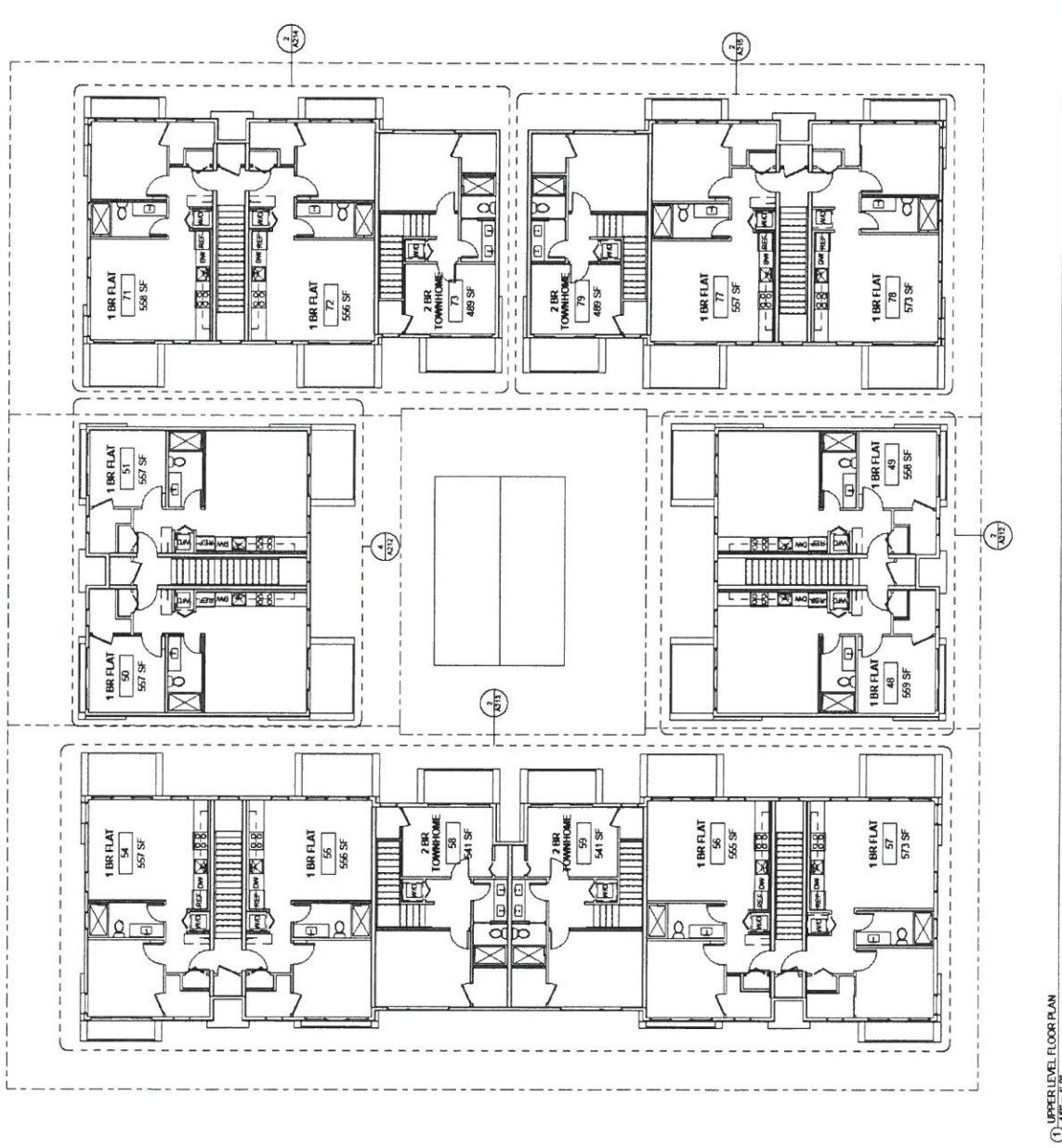
1 SITE PLAN
 1/8" SCALE 1/8" = 1'-0"

Floor Plans & Elevations

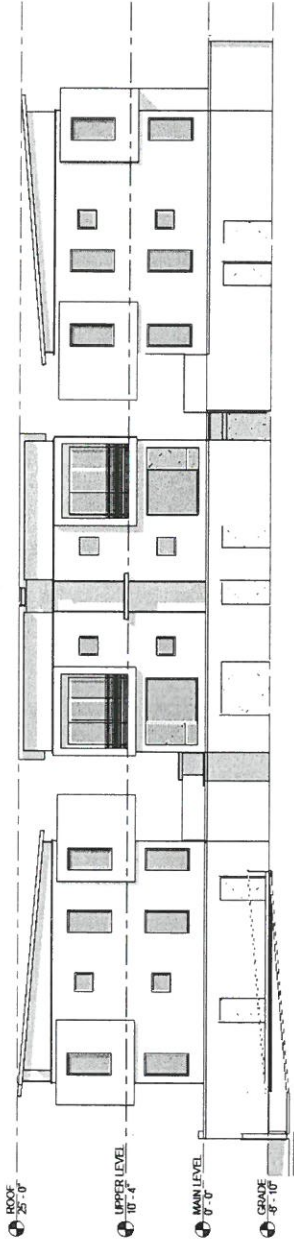




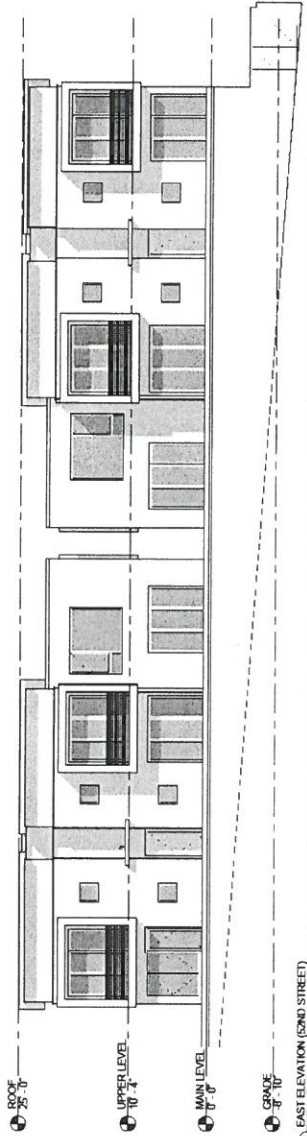
① LEVEL 2 FLOOR PLAN
 1/8" = 1'-0"



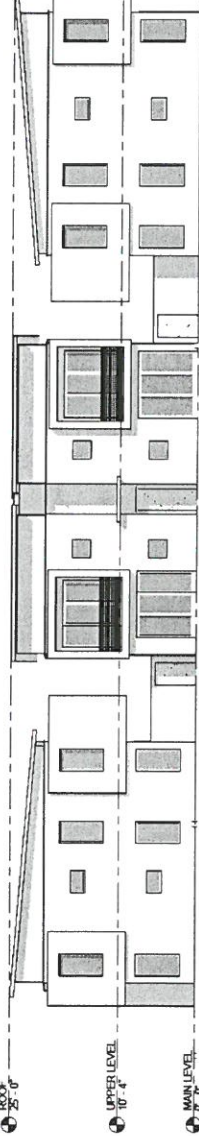
① UPPER LEVEL FLOOR PLAN
 1/8" = 1'-0"



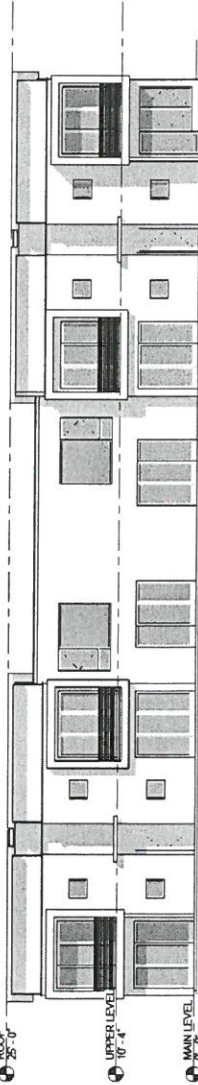
① NORTH ELEVATION (REAR)
1/8" = 1'-0"



② EAST ELEVATION (2ND STREET)
1/8" = 1'-0"



③ SOUTH ELEVATION (BURNSIDE STREET)
1/8" = 1'-0"



④ WEST ELEVATION (SIDE)
1/8" = 1'-0"

